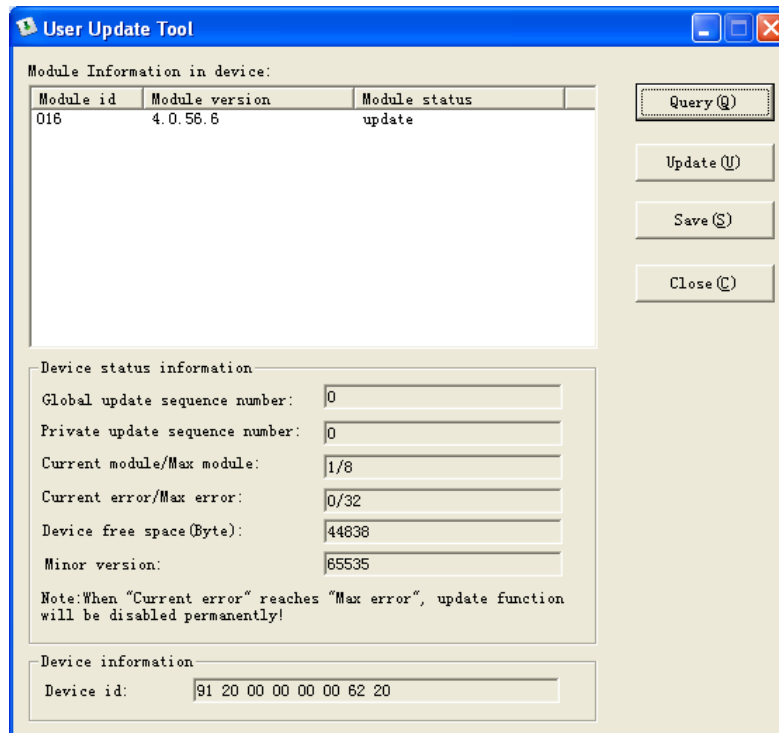
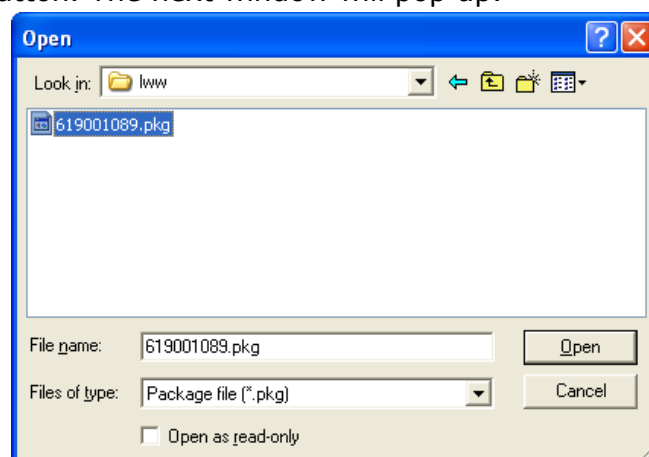


## How to update the dongle by Client Tool

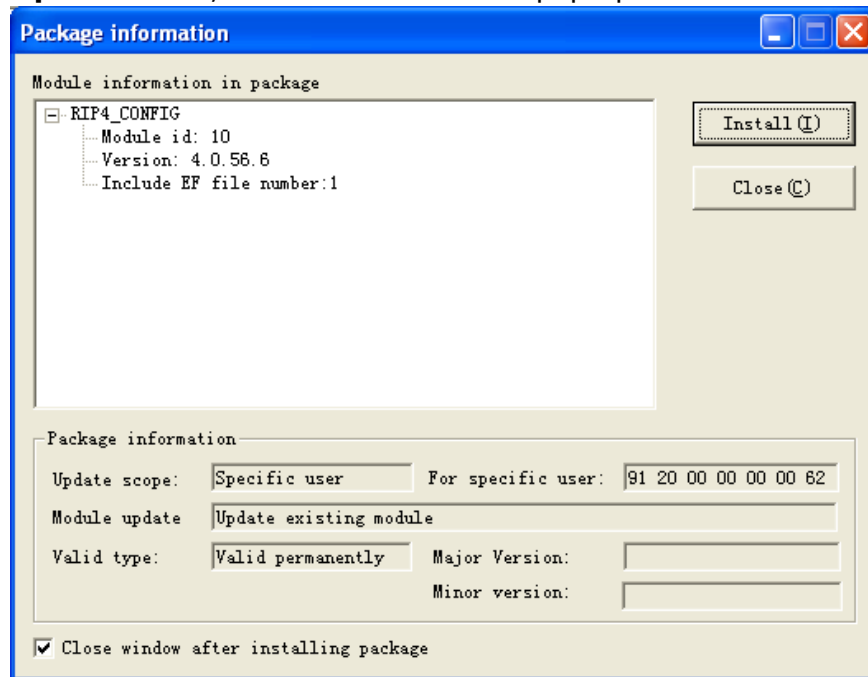
1. Please make sure the dongle of EagleRIP 4.x is plugged in.
2. Make sure EagleRIP program is closed.
3. Run **ClientTool.exe** which is located at \Tools\Dongle tool\ClientTool\ folder of EagleRIP installation CD.
4. Click **"Query"** button to read the dongle, the next window will pop up.



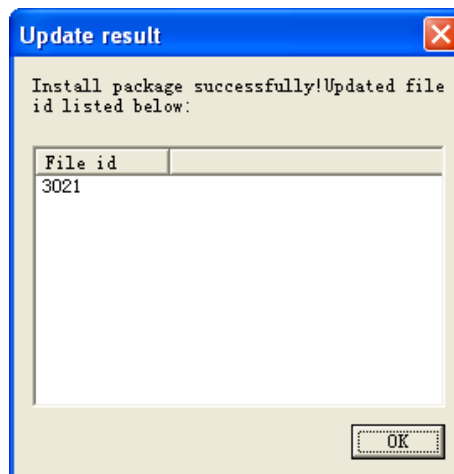
5. Click **"Update"** button. The next window will pop up.



6. Select the **\*.pkg** file which is sent by Founder.
7. Click **"Open"** button, then this window will pop up:

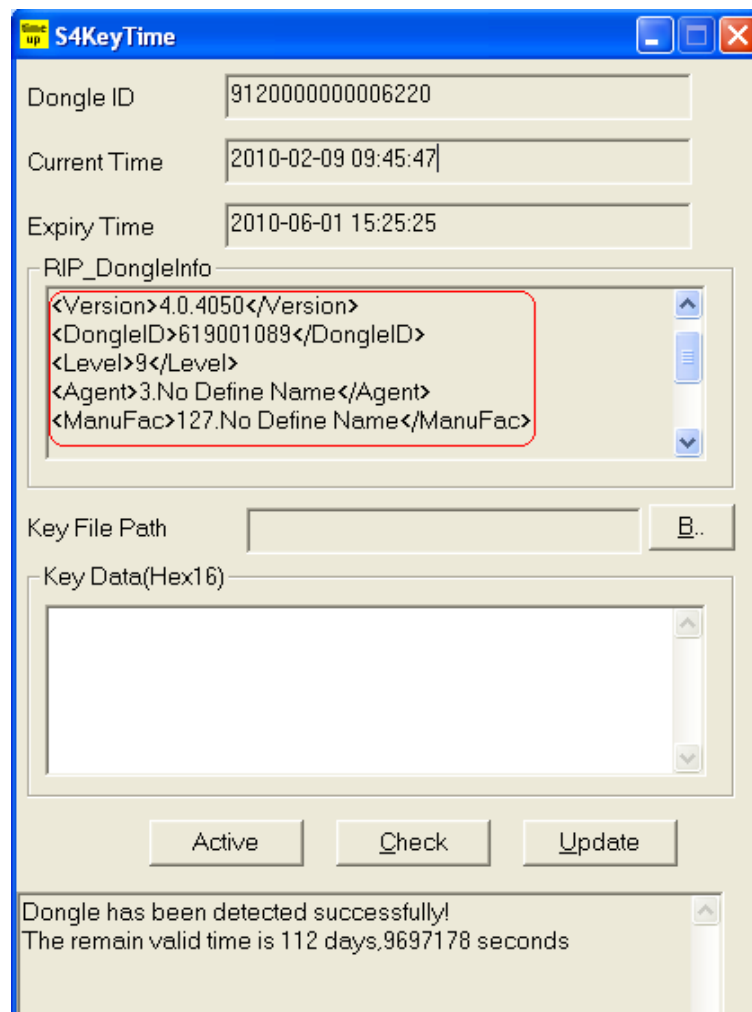


8. Click **"Install"** to install the updated program.
9. The next window pops up if the update is installed successfully. Click **"OK"** to close the window.



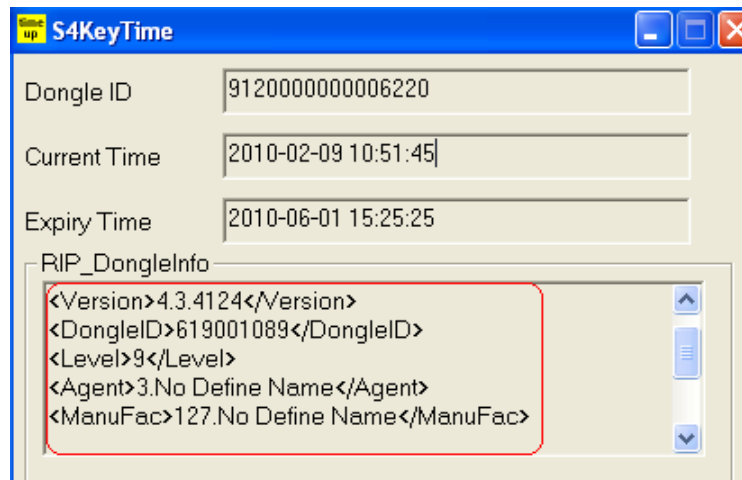
## How to check the dongle of EagleRIP 4.X by S4RIPTIME tool?

1. Please make sure the dongle of EagleRIP 4.x is plugged in.
2. Make sure EagleRIP program is closed.
3. Run S4RIPTIME\_ENG.EXE which is located at \Tools\Dongle tool\ folder of EagleRIP installation CD.
4. The next window will pop up; you can get the information such as dongle ID, expired time etc.
5. You can send the screen shot including the next information in the red rectangle to Founder if needed.



6. If the dongle Version is 4.0.4050, then you cannot run EagleRIP 4.3 version or above on this dongle, please update your dongle by ClientTool.

7. After you have successfully updated your dongle, then the dongle information will be shown as below. **Only when your dongle version is 4.3.4124, then you can run EagleRIP 4.3 or above version on your dongle.**



## How to extend the timer dongle or make it permanent

1. You can copy the EagleRIP 4.x time key file (TimeUDKEY.dat) to the EagleRIP 4.x \bin folder, if the original file name contains dongle ID number or has any other name please rename it TimeUDKEY.dat. The next time the EagleRIP starts the dongle will have been set to either a new date or made permanent, depending on the content of the .dat file.
2. Or you can use S4RIPTIME\_ENG.EXE to extend your dongle or make it permanent. Run S4RIPTIME\_ENG.EXE. Click "Browse" button and select the EagleRIP 4.x time key file (for example TimeUDKEY.dat). Click "Update" button, then you can see the expired time is changed.

End